

## 폴리머 컷아웃 스위치 Cutouts with Polymeric Insulator



### 특징

우수한 호환성  
경량으로 운반 및 설치 용이  
안정된 성능  
깨지지 않음  
우수한 내후성  
자기 세척 기능

### FEATURE

GAPLESS METAL OXIDE ARRESTER  
EASY TO HANDLE AND INSTALL  
ECONOMICAL SURGE PROTECTION  
RESISTANT TO BREAKAGE  
ROBUST DESIGN  
OPTIONAL GROUND ISOLATOR

CUTOUTS

### 응용 APPLICATION

주상 변압기 1차측 선로에 부착하여 변압기를 보호하고 선로의 개폐를 위한 폴리머 컷아웃 스위치

Protection technologies from overcurrents introduced by abnormal condition have been utilized with cutouts. Recently the state-of-the-art technology of the polymer has been integrated into the conventional overcurrent protection device. PYUNGIL cutouts provides dependable overcurrent protection performance for primary distribution systems. Currently two voltage rated cutouts is available, 15kV and 27kV.

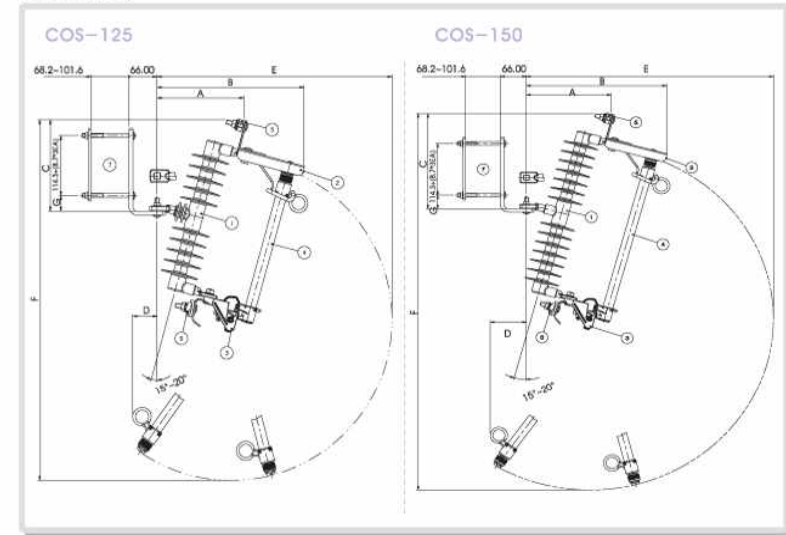
PYUNGIL cutouts is electrically and mechanically interchangeable with the other manufacturers' such as S&C, A.B. Chance or ABB cutouts. In addition, Fuse holder interchangeability reduces the time required to replace the fuse during an outage. PYUNGIL cutouts is designed to meet or exceed the requirements of ANSI Standards C37.41-1994 and C37.42-1989, NEMA SG-2-1986 and the other relevant industrial standards.

PYUNGIL cutouts is available in several frame sizes to match the BIL of each distribution system, in a variety of fault current interrupting ratings and optional load break designs. It can be applied to capacitor banks, transformer banks, and for sectionalizing circuits. It is equipped with hooks for use with a portable load break tool, allowing it to be used to break load currents.

www.pyungil.com

## 폴리머 CUT OUT SWITCH CUTOUTS WITH POLYMERIC INSULATOR

### 도면 Drawing



### Dimension of COS 125

A	B	C	D	E	F	G
205.0	348.0	216.0	93.0	554.0	852.0	37.0

### Dimension of COS 150

A	B	C	D	E	F	G
217.0	358.0	264.0	158.0	632.0	1038.0	37.0

### 폴리머 컷 아웃 스위치 사양

형식(TYPE)	PCOS-125	PCOS-150
정격 전압(Rated Voltage)	25.8kV	25.8kV
최대설계전압(Rated Maximum Voltage)	27.0kV	27.0kV
정격주파수(Rated Frequency)	60Hz	60Hz
정격 연속전류(Rated Continuous Current)	100A	100A
정격 차단전류 (Rated Interrupting Current)	비대칭 실효치 Asym 10kA	비대칭 실효치 Asym 12kA
	대칭 실효치 Sym 7.1kA	대칭 실효치 Sym 8kA
상용주파내전압 (Power-Frequency Withstand Voltage)	단자-대지 Terminal-to-Ground	건조(Dry) 주수(Wet)
	단자-단자 Terminal-to-Terminal	42kV 36kV
	단자-대지 Terminal-to-Ground	42kV 70kV
충격 내전압 (Impulse Withstand Voltage)	단자-대지 Terminal-to-Ground	125kV 150kV
	단자-단자 Terminal-to-Terminal	125kV 150kV
적용규격(Applied standard)	ANSI / IEEE Std C37.40, C37.41	